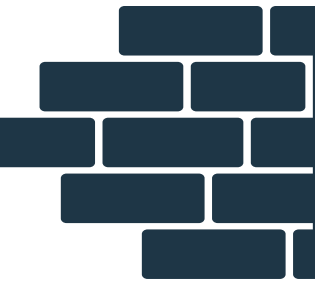


FURNISHINGS REMINISCENT OF EARLIER TIMES. FOR TODAY.

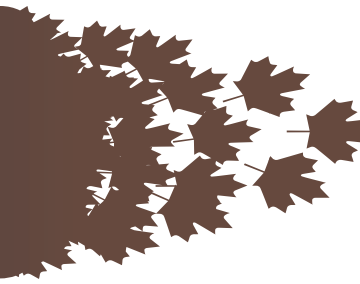


TOWN & COUNTRY
furnishings LLC

2021 PRODUCT CATALOG



TOWN & COUNTRY *furnishings* LLC



Town & Country Furnishings is a family-run business dedicated to bringing time-honored furniture design, superbly crafted, to today's homes. We create furniture of simple elegance, complemented by a selection of traditional fabrics that span the test of time. Our furniture speaks of the past yet blends beautifully with today's styles and needs. As functional as it is beautiful, our period furniture is perfect as a centerpiece for a room or for a cozy corner. Simple, traditional lines offer efficient comfort. Textures paired with patterns reminiscent of earlier times welcome you to sit, relax, and stay awhile.

We offer two distinctive product lines. Our American Primitives collection represents the "Early American" period in furnishings. Modeled after European furniture styles, its straight lines, simple design and sturdy dimensions hearken back to colonial times. Our American Country collection is for those who desire the charm and rustic nature of country furniture, but with modern comforts. Our 8-way, hand-tied, coiled springs and seats are just one example of our design that brings added comfort and relaxation.

Of course, with Town & Country Furnishings, our craftsmanship is second to none. Our furniture is not only a beautiful addition to your home décor, but also a piece of furniture to use and enjoy for years to come. Made in the USA, home to unparalleled quality in furniture, our furnishings feature solid wood foundations, color rich fabrics, and finishes that bring the look and feel of history into your home.



American Primitive





BARREL AP:6



CAMELBACK AP:8



CENTER INN GENT AP:10



GUILDFORD AP:12



JACOBAN AP:14



LIBRARY WING AP:15



LITTLE BIT OF COUNTRY AP:16

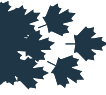


MAKE-DO AP:18



NORTHHAMPTON AP:20





PUBLIC HOUSE AP:22



SHERATON AP:24



WESTBORO AP:26



WOODSTOCK AP:28



UPHOLSTERED CHAIRS AP:30



UPHOLSTERED SETTLES AP:36



UPHOLSTERED SOFAS AP:40





B



A



SIDE VIEW





C

| | A: UC-BC Chair | B: UST-BS Settle | C: USF-BS Sofa |
|----------------|-------------------------------|-------------------------------|-----------------|
| Overall Length | 28 | 46 | 65 |
| Overall Depth | 24 | 24 | 24 |
| Overall Height | 45 | 45 | 45 |
| Seat Length | 18 | 36 | 55 |
| Seat Depth | 19 | 19 | 19 |
| Seat Height | 18 | 18 | 18 |
| Fabric | Historic Flame 6001 Sandstone | Historic Flame 6001 Sandstone | Otto 2035 Multi |
| Wood | Black | Black | Walnut |





A

COVENTRY CAMELBACK





FORMAL CAMELBACK



| | A: USF-CCM72 Sofa | B: USF-CM72 Sofa | C: USF-CM83 Sofa |
|----------------|-------------------------------|------------------------------------|-------------------------|
| Overall Length | 72 | 72 | 83 |
| Overall Depth | 32 | 32 | 32 |
| Overall Height | 36 | 36 | 36 |
| Seat Length | 55 | 54 | 65 |
| Seat Depth | 22 | 21 | 21 |
| Seat Height | 19 | 19 | 19 |
| Fabric | Historic Flame 6001 Sandstone | Tavern Check 1001 Black Mustard | Carson 2023 Rose / Ecrú |
| Wood | Walnut | Black | Mahogany |



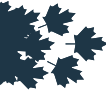


A



B





C



E



D

| | A: UC-KD Kiddie Chair | B: UC-CIG Chair | C: UST-CIG Settle | D: USF-CIG Sofa | E: UO-CIF Footstool |
|-----------------------|-------------------------|-------------------------|------------------------------------|-----------------------|-------------------------------|
| Overall Length | 22 | 31 | 53 | 68 | 18 |
| Overall Depth | 20 | 30 | 30 | 30 | 14 |
| Overall Height | 35 | 51 | 51 | 52 | 18 |
| Seat Length | 13 | 19 | 41 | 56 | |
| Seat Depth | 13 | 20 | 20 | 20 | |
| Seat Height | 16 | 21 | 21 | 21 | |
| Fabric | Customer's Own Material | Customer's Own Material | Willowtree 2063 Black / Mustard | Roswell 1008 Wheat | Pineapple 2002 Rose / Ecru |
| Wood | Walnut | Black | Black | Walnut | Black |





A

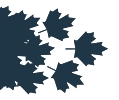



B

| | A: UC-CG Chair | B: USF-G Sofa |
|----------------|-----------------|-------------------------|
| Overall Length | 26 | 72 |
| Overall Depth | 25 | 24 |
| Overall Height | 49 | 34 |
| Seat Length | 20 | 67 |
| Seat Depth | 20 | 21 |
| Seat Height | 20 | 20 |
| Fabric | Otto 2035 Multi | Customer's Own Material |
| Wood | Walnut | Black |



| | A: UC-JKB Chair | B: UST-JKB Settle | C: UO-JKBFT Footstool |
|----------------|--------------------------|-----------------------------|--------------------------------|
| Overall Length | 24 | 46 | 22 |
| Overall Depth | 26 | 26 | 16 |
| Overall Height | 49 | 49 | 17 ½ |
| Seat Length | 20 | 42 | |
| Seat Depth | 17 | 17 | |
| Seat Height | 19 | 19 | |
| Fabric | Tripoli 2056 Rose / Ecrú | Arlington 2059 Black / Ecrú | Snowflake 2029 Mustard / Black |
| Wood | Black | Black | Black |



A



B

| | A: UC-LW Chair | B: UST-LW Settle |
|----------------|------------------------------|-------------------|
| Overall Length | 30 | 56 |
| Overall Depth | 28 | 28 |
| Overall Height | 48 | 48 |
| Seat Length | 18 ½ | 44 ½ |
| Seat Depth | 18 ½ | 18 ½ |
| Seat Height | 20 ½ | 20 ½ |
| Fabric | Lovers Knot 2025 Rose / Ecru | Roswell 1007 Sage |
| Wood | Black | Walnut |



A



TURNED LEG



SQUARE LEG

The Little Bit Of Country collection is available with square or turned legs

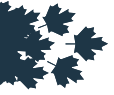




| | A: UC-LBC Chair | B: UC-LBC Chair | C: UST-LBC Settle |
|----------------|-------------------------------------|------------------------------|---------------------|
| Overall Length | 27 | 27 | 44 |
| Overall Depth | 24 | 24 | 24 |
| Overall Height | 47 | 47 | 47 |
| Seat Length | 16 | 16 | 44 ½ |
| Seat Depth | 17 | 17 | 17 |
| Seat Height | 18 | 18 | 18 |
| Fabric | Tavern Check 1002 Ecru / Mustard | Cagney 1026 Ecru / Cranberry | Tifton 1025 Mustard |
| Wood | Turned Walnut | Mahogany | Turned Black |







| | A: UC-MDW Wing | B: UC-MDW Wing | C: UC-MDA Arm | D: UC-MDS Side |
|----------------|----------------------------------|-------------------------|-----------------|----------------------------------|
| Overall Length | 23 | 23 | 23 | 23 |
| Overall Depth | 20 | 20 | 20 | 20 |
| Overall Height | 48 | 48 | 48 | 48 |
| Seat Length | 17 | 17 | 18 | 18 |
| Seat Depth | 16 | 16 | 16 | 16 |
| Seat Height | 20 | 20 | 19 | 19 |
| Fabric | New Holland 2030 Ecru / Black | Customer's Own Material | Otto 2035 Multi | Pineapple 2003 Ecru / Mustard |
| Wood | Black | Black | Black | Black |





All Northampton pieces are available with turned legs, square legs or square legs with stretchers





D



E

| | A: UC-NH Chair | B: UC-NHQ Chair & A Quarter | C: UC-NHH Chair & A Half | D: USF-GN64 Grand NH | E: USF-GN75 Super Grand NH |
|----------------|----------------------|--------------------------------|-------------------------------------|---------------------------------|-----------------------------------|
| Overall Length | 31 | 36 | 43 | 64 | 75 |
| Overall Depth | 32 | 32 | 32 | 32 | 32 |
| Overall Height | 48 | 48 | 48 | 48 | 48 |
| Seat Length | 20 ½ | 25 | 31 | 52 | 63 |
| Seat Depth | 22 | 22 | 22 | 22 | 22 |
| Seat Height | 21 | 21 | 21 | 21 | 21 |
| Fabric | Quatrain 2078 Fog | Little Bit 2021 Rose / Ecru | Tavern Check 1002 Ecru / Mustard | Lovers Knot 2025 Rose / Ecru | Snowflake 2029 Mustard / Black |
| Wood | Walnut | Black | Black | Walnut | Black |





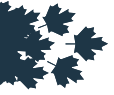
A



B



C



D

| | A: UC-PH Chair | B: UC-PH Chair | C: UC-PH Chair | D: UST-PH Settle |
|-----------------------|-------------------------|--------------------------------|------------------|------------------|
| Overall Length | 34 | 34 | 34 | 56 |
| Overall Depth | 31 | 31 | 31 | 32 |
| Overall Height | 50 | 50 | 50 | 53 |
| Seat Length | 21 | 21 | 21 | 44 |
| Seat Depth | 20 | 20 | 20 | 20 |
| Seat Height | 19 | 19 | 19 | 21 |
| Fabric | Customer's Own Material | Tavern Check 1005 Ecru / Black | Kairn 2073 Spice | Otto 2035 Multi |
| Wood | Walnut | Black | Black | Black |



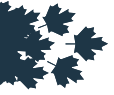


A



B





C

| | A: UC-S Chair | B: USF-S67 67" Sofa | C: USF-77 77" Sofa |
|-----------------------|---------------------|------------------------------|------------------------------|
| Overall Length | 32 | 67 | 77 |
| Overall Depth | 30 | 31 | 31 |
| Overall Height | 49 | 35 | 35 |
| Seat Length | 21 | 58 | 68 |
| Seat Depth | 19 ½ | 21 | 21 |
| Seat Height | 19 ½ | 20 | 20 |
| Fabric | Antique 2036 Desert | Lovers Knot 2026 Ecrú / Navy | Lovers Knot 2026 Ecrú / Navy |
| Wood | Mahogany | Black | Black |



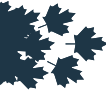


A



B





C

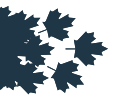
| | A: UC-WB Chair | B: USF-W Sofa | C: USF-W Sofa |
|----------------|-------------------------------|-------------------------|--------------------------------|
| Overall Length | 24 | 58 | 58 |
| Overall Depth | 25 | 25 | 25 |
| Overall Height | 49 | 34 | 34 |
| Seat Length | 20 | 52 | 52 |
| Seat Depth | 20 ½ | 21 | 21 |
| Seat Height | 17 | 18 ½ | 18 ½ |
| Fabric | Historic Flame 6001 Sandstone | Customer's Own Material | Snowflake 2029 Black / Mustard |
| Wood | Mahogany | Black | Black |





| | A: UC-WS Chair | B UST-WDST Settle | C: UO-WSFT Footstool |
|----------------|-----------------|-------------------------------------|----------------------|
| Overall Length | 31 | 48 | 12 |
| Overall Depth | 22 | 22 | 18 |
| Overall Height | 50 | 49 | 15 |
| Seat Length | 17 | 33 | |
| Seat Depth | 17 | 16 | |
| Seat Height | 20 | 21 | |
| Fabric | Otto 2035 Multi | Lovers Knot 2024 Black / Mustard | Otto 2035 Multi |
| Wood | Black | Black | Black |





D



E



F

| | D: UC-WS Chair | E: UC-WS Chair | F: UC-WW Woodie |
|----------------|------------------------------------|-------------------|-------------------------|
| Overall Length | 31 | 31 | 31 |
| Overall Depth | 22 | 22 | 22 |
| Overall Height | 50 | 50 | 50 |
| Seat Length | 17 | 17 | 17 |
| Seat Depth | 17 | 17 | 17 |
| Seat Height | 20 | 20 | 20 |
| Fabric | Tavern Check 1001 Black/Mustard | Trenton 2007 Onyx | Customer's Own Material |
| Wood | Black | Black | Black |





Upholstered Chair COLLECTION



A



B



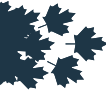
C



D

| | A: UC-FS Fireside Chair | B: UC-DVS Devonshire Chair | C: UC-CW Country Classic Wing Chair | D: UC-A Arabella Chair |
|----------------|----------------------------|-------------------------------|----------------------------------------|---------------------------------|
| Overall Length | 28 | 29 | 32 | 32 |
| Overall Depth | 26 | 32 | 31 | 34 |
| Overall Height | 55 | 45 | 47 | 47 |
| Seat Length | 19 | 18 | 20 | 20 |
| Seat Depth | 21 | 20 | 22 | 22 |
| Seat Height | 20 | 17 | 20 | 19 |
| Fabric | Liberty 1032 Brazen | Historic Flame 6001 | Tripoli 2050 Black / Ecru | Little Bit 2005 Black / Ecru |
| Wood | Black | Mahogany | Black | Custom Finish |





E



F

SHOWN WITH
OPTIONAL TICK



G

| | E: UC-HS Hearthside Chair | F: UC-DVS Devonshire Chair | G: UC-CW Country Classic Wing Chair |
|----------------|---------------------------|----------------------------|-------------------------------------|
| Overall Length | 28 | 29 | 32 |
| Overall Depth | 29 | 32 | 31 |
| Overall Height | 48 | 45 | 47 |
| Seat Length | 18 | 18 | 20 |
| Seat Depth | 21 | 20 | 22 |
| Seat Height | 21 | 17 | 20 |
| Fabric | Snowflake 2061 Rose / Ecu | Customer's Own Material | New Holland 2030 Ecu / Black |
| Wood | Walnut | Mahogany | Black |





Upholstered Chair COLLECTION



H



I



J



K

| | H: UC-MRL Marlboro Chair | I: UC-JA John Adams Chair | J: UC-JA John Adams Chair | K: UC-PB Pembroke Chair |
|----------------|---------------------------------|------------------------------|------------------------------|--------------------------------|
| Overall Length | 29 | 32 | 32 | 34 |
| Overall Depth | 31 | 30 | 30 | 32 |
| Overall Height | 47 | 50 | 50 | 45 |
| Seat Length | 19 | 24 | 24 | 23 |
| Seat Depth | 19 | 18 | 18 | 22 |
| Seat Height | 19 | 20 | 20 | 19 |
| Fabric | Lovers Knot 2025 Rose / Ecrú | Vintage 2016 Scarlet | Salem 2031 Ebony | Little Bit 2022 Navy / Ecrú |
| Wood | Walnut | Mahogany | Walnut | Walnut |





L



M



N

| | L: UC-WKF Wakefield Chair | M: UC-MW Martha Washington Chair | N: UC-VA Virginia Chair |
|----------------|------------------------------|-------------------------------------|----------------------------|
| Overall Length | 25 | 26 | 32 |
| Overall Depth | 29 | 28 | 33 |
| Overall Height | 44 | 44 | 50 |
| Seat Length | 16 | 22 | 20 |
| Seat Depth | 18 | 18 | 21 |
| Seat Height | 17 | 18 | 21 |
| Fabric | Customer's Own Material | Customer's Own Material | Customer's Own Material |
| Wood | Walnut | Walnut | Walnut |



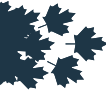


P



O





Q



SHOWN IN OTTO 2035 MULTI-COLOR

| | O: UC-RCL RC Recliner | P: JBR JB Recliner | Q: UC-RCL RC Recliner |
|----------------|--------------------------------|------------------------|------------------------------------|
| Overall Length | 36 | 32 | 36 |
| Overall Depth | 37 | 36 | 37 |
| Overall Height | 46 | 42 | 46 |
| Seat Length | 21 | 20 | 21 |
| Seat Depth | 21 | 21 | 21 |
| Seat Height | 19 | 18 1/2 | 19 |
| Fabric | Little Bit 2021 Ecru / Rose | Presidio 1013 Chestnut | Lovers Knot 2039 Navy / Natural |
| Wood | Walnut | Walnut | Mahogany |





A





B



C



| | A: UST-LBC Little Bit of Country Settle | B: UST-BS Barrel Settle | C: UST-JKB Jacobean Settle |
|----------------|-----------------------------------------|-------------------------------|-----------------------------|
| Overall Length | 44 | 46 | 46 |
| Overall Depth | 24 | 24 | 26 |
| Overall Height | 47 | 45 | 49 |
| Seat Length | 44 ½ | 36 | 42 |
| Seat Depth | 17 | 19 | 17 |
| Seat Height | 18 | 18 | 19 |
| Fabric | Wool 3012 Linen | Historic Flame 6001 Sandstone | Arlington 2059 Black / Ecru |
| Wood | Black Square | Black | Black |





| | D: UST-HM Heart of Massachusetts Settle | E: UST-CIG Center Inn Gent Settle |
|----------------|--------------------------------------------|--------------------------------------|
| Overall Length | 49 | 53 |
| Overall Depth | 34 | 30 |
| Overall Height | 48 | 51 |
| Seat Length | 39 | 41 |
| Seat Depth | 22 | 20 |
| Seat Height | 20 | 21 |
| Fabric | Little Bit 2005 Black / Ecu | Willowtree 2063 Black / Mustard |
| Wood | Walnut | Black |





F



| F: UST-PH Public House Settle | |
|-------------------------------|-----------------|
| Overall Length | 56 |
| Overall Depth | 31 |
| Overall Height | 53 |
| Seat Length | 44 |
| Seat Depth | 20 |
| Seat Height | 19 |
| Fabric | Otto 2035 Multi |
| Wood | Black |





Upholstered Sofa COLLECTION



A



B

| | A: USF-HB Hall Bench | (Not Shown): USF-CH54 54" Country Heart Sofa | B: USF-DF54 54" Deerfield Sofa |
|----------------|--------------------------|----------------------------------------------|--------------------------------|
| Overall Length | 43 | 54 | 54 |
| Overall Depth | 19 | 29 | 35 |
| Overall Height | 35 | 35 | 40 |
| Seat Length | 32 | 44 | 35 |
| Seat Depth | 13 | 20 | 21 |
| Seat Height | 19½ | 20 | 20 |
| Fabric | Tripoli 2047 Ecru / Navy | See Fabric Selections | Snowflake 2029 Mustard / Black |
| Wood | Black | See Wood Selections | Mahogany |





C



D



E

| | C: USF-BK60 60" Berkshire Sofa | D: USF-CHP65 65" Chippendale Sofa | E: USF-CH66 66" Country Heart Sofa | (Not Shown): USF-CH73 73" Country Heart Sofa |
|----------------|-----------------------------------|--------------------------------------|---------------------------------------|----------------------------------------------------|
| Overall Length | 60 | 65 | 66 | 73 |
| Overall Depth | 27 | 29 | 29 | 29 |
| Overall Height | 36 | 35 | 35 | 35 |
| Seat Length | 51 | 51 | 56 | 63 |
| Seat Depth | 19 | 19 | 20 | 20 |
| Seat Height | 20 | 19 | 20 | 20 |
| Fabric | Customer's Own Material | Lovers Knot 2025 Ecru / Rose | Roswell 2011 Navy | See Fabric Selections |
| Wood | Walnut | Black | Black | See Wood Selections |





F



G



H

| | F: USF-WNM73 73" William & Mary Sofa | G: USF-CHP76 76" Chippendale Sofa | H: USF-DF77 77" Deerfield Sofa |
|----------------|-----------------------------------------|--------------------------------------|-----------------------------------|
| Overall Length | 73 | 76 | 77 |
| Overall Depth | 29 | 29 | 35 |
| Overall Height | 37 | 35 | 40 |
| Seat Length | 64 | 62 | 58 |
| Seat Depth | 18 ½ | 19 | 21 |
| Seat Height | 21 | 19 | 20 |
| Fabric | Customer's Own Material | Customer's Own Material | Pineapple 2003 Ecu / Mustard |
| Wood | Black | Walnut | Walnut |





I



J

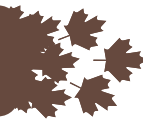


K

| | I: USF-SHB78 78" Shelbourne Sofa | J: USF-SHB78 78" Shelbourne Sofa | K: USF-BK82 82" Berkshire Sofa | (Not Shown): USF-DF85 85" Deerfield Sofa |
|----------------|-------------------------------------|-------------------------------------|-----------------------------------|---------------------------------------------|
| Overall Length | 78 | 78 | 82 | 85 |
| Overall Depth | 30 | 30 | 27 | 35 |
| Overall Height | 34 | 34 | 36 | 40 |
| Seat Length | 67 | 67 | 73 | 66 |
| Seat Depth | 21 | 21 | 19 | 21 |
| Seat Height | 19 | 19 | 20 | 20 |
| Fabric | Gilbert 2082 Honey | Little Bit 2006 Ecru / Mustard | Customer's Own Material | See Fabric Selections |
| Wood | Black | Mahogany | Walnut | See Wood Selections |



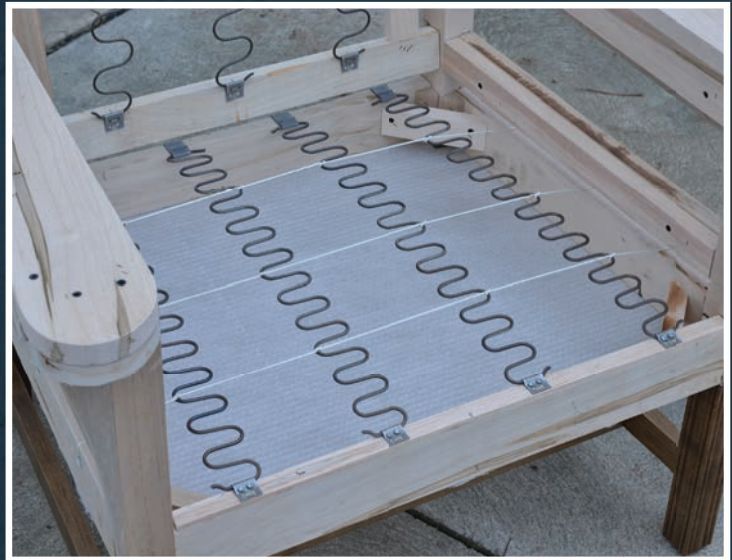
QUALITY ASSURANCE



American Primitive

NO-SAG ZIGZAG SPRINGS

Made from two-dimensional S-shaped heavy-duty wire, zigzag springs are known in the upholstery industry as “No-Sag” springs are typically used in ottomans, sofas and chairs and are ideal in furniture pieces with shallow frames.



American Country & All American

TRADITIONAL EIGHT-WAY HAND-TIED

A time-honored construction method using a series of coils, each tied — from front to back, side to side and diagonally — eight times. This system creates even comfort and prevents “give” in the frame. This traditional method is believed to offer superior comfort, but should never be confused with “Drop-In” or “Machine-Tied” coils, which some furniture retailers pass off as “Eight-Way”.



American Country





BOONE TRAIL AC:48



CAPE COD AC:49



COUNTRY CHIPPENDALE AC:50



FOOTSTOOLS AC:51

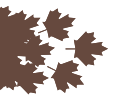


LAUREL RIDGE AC:52



LINCOLN AC:53





MILLERS CREEK AC:54



SARAH REAVER AC:55



SOUTHAMPTON AC:56



STOCKBRIDGE AC:57



STONY FORK AC:59



VERMONT AC:60





A

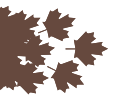
B



ALSO AVAILABLE: JBT-38 BOONE TRAIL CHAIR

| | (Not Shown) JBT-37 Chair | A: JBT-58 Love Seat | B: JBT-78 Sofa |
|----------------|--------------------------|--------------------------|-----------------|
| Overall Length | 33 | 58 | 78 |
| Overall Depth | 34 | 34 | 34 |
| Overall Height | 42 | 37 | 38 |
| Seat Length | 21 | 41 | 61 |
| Seat Depth | 20 ½ | 21 | 21 |
| Seat Height | 20 | 20 | 20 |
| Fabric | See Fabric Selections | Monarch 2058 Rose / Ecrú | Otto 2035 Multi |
| Wood | See Fabric Selections | Mahogany | Mahogany |





A



B



C

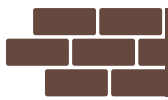


D

SHOWN WITH EXTRA WRAP CUSHION

| | A: JCC-32 Chair | B: JCC-42 Chair & A Half | C: JCC-54 Settle | D: JCC-70 Sofa |
|----------------|-------------------------------------|-------------------------------|-----------------------|-----------------------|
| Overall Length | 32 | 42 | 54 | 70 |
| Overall Depth | 34 | 34 | 34 | 34 |
| Overall Height | 47 | 47 | 47 | 47 |
| Seat Length | 20 ½ | 30 | 42 | 58 |
| Seat Depth | 20 | 20 | 20 | 20 |
| Seat Height | 20 | 20 | 20 | 20 |
| Fabric | Lovers Knot 2024 Mustard / Black | Pineapple 2002 Rose / Ecru | Virginia Sampler 3002 | Sonora 2081 Bronze |
| Wood | Black | Walnut | Black | Black |





Country Chippendale COLLECTION



A



B



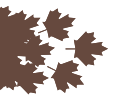
C

D



| | A: JCP-35 Chair | B: JCP-56 Chair & A Half | C: JCP-77 Sofa | D: JCP-83 Sofa |
|----------------|----------------------------------|--------------------------|-------------------------|-------------------|
| Overall Length | 35 | 56 | 78 | 83 |
| Overall Depth | 33 | 33 | 33 | 33 |
| Overall Height | 38 | 38 | 38 | 38 |
| Seat Length | 21 | 41 | 62 | 68 |
| Seat Depth | 20 ½ | 20 ½ | 20 ½ | 20 ½ |
| Seat Height | 20 ½ | 20 ½ | 20 ½ | 20 ½ |
| Fabric | Virginia Sampler 3002 Mustard | Tifton 1009 Cranberry | Valley Flame 3001 Ebony | Salem 2033 Cobalt |
| Wood | Black | Mahogany | Black | Black |





STANDARD SIZES AVAILABLE: JBF-48, JBF-44, JBF-42, JBF-36, JBF-32, JBF-30, JBF-24, JBF-22, JBF-20

| | A: JBF-20 Footstool | B: JBF-44 Bench | C: JBF-48 Bench |
|----------------|-----------------------------|---------------------------|-----------------------|
| Overall Length | 20 | 44 | 48 |
| Overall Depth | 16 | 16 | 16 |
| Overall Height | 17 | 17 | 17 |
| Fabric | Cagney 1006 Black / Mustard | Snowflake 2061 Rose / Ecu | Washington 3007 Wheat |
| Wood | Black | Mahogany | Mahogany |





A



B



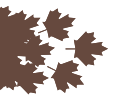
C



D

| | A: JLR-31 Chair | B: JLR-42 Chair & A Half | C: JLR-56 Settle | D: JLR-70 Sofa |
|----------------|--------------------------|--------------------------|------------------|----------------------------------|
| Overall Length | 32 | 42 | 56 | 70 |
| Overall Depth | 34 | 34 | 34 | 34 |
| Overall Height | 46 | 47 | 47 | 47 |
| Seat Length | 19 | 30 | 44 | 58 |
| Seat Depth | 19 ½ | 19 ½ | 19 ½ | 19 ½ |
| Seat Height | 20 | 20 | 20 | 20 |
| Fabric | Monarch 2058 Rose / Ecru | Lismore 1075 Lodge | Salem 2031 Ebony | Lovers Knot 2024 Mustard / Black |
| Wood | Walnut | Black | Walnut | Mahogany |





A



B

ALSO AVAILABLE: JLLC LOW BACK CROWN TOP, JLLHS HIGH BACK STRAIGHT TOP

| | A: JLLS Low Back Straight Top Chair | B: JLHC High Back Crown Top Chair |
|----------------|-------------------------------------|-----------------------------------|
| Overall Length | 19 ½ | 19 ½ |
| Overall Depth | 26 | 26 |
| Overall Height | 38 | 43 |
| Seat Length | 19 ½ | 19 ½ |
| Seat Depth | 17 ½ | 17 ½ |
| Seat Height | 18 ½ | 18 ½ |
| Fabric | Erin 1023 Ecu / Mustard | Tavern Check 1003 Ecu / Rose |
| Wood | Custom Finish | Custom Finish |





A



B

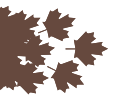


C

ALSO AVAILABLE: JMC-42 CHAIR & A HALF

| | A: JMC-32 Chair | (Not Shown): JMC-42 Chair & A Half | B: JMC-54 Settle | C: JMC-70 Sofa |
|----------------|----------------------------|------------------------------------|---------------------|-----------------------|
| Overall Length | 32 | 42 | 54 ½ | 70 |
| Overall Depth | 34 | 34 | 34 | 34 |
| Overall Height | 50 | 50 | 50 | 50 |
| Seat Length | 20 | 30 | 43 | 58 |
| Seat Depth | 20 ½ | 20 ½ | 20 ½ | 20 ½ |
| Seat Height | 19 ½ | 19 ½ | 19 ½ | 19 ½ |
| Fabric | Snowflake 2061 Rose / Ecru | See Fabric Selections | Antique 2036 Desert | New Holland 2048 Dusk |
| Wood | Black | See Wood Selections | Walnut | Black |





A



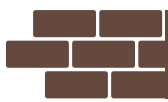
C



B

| | A: JSR-26 Chair | B: JSR-31 Master Chair | C: JSR-47 Settle |
|----------------|------------------------------|--------------------------------|--------------------------------|
| Overall Length | 26 | 31 | 47 |
| Overall Depth | 29 | 29 | 29 |
| Overall Height | 45 | 45 | 45 |
| Seat Length | 19 | 23 | 39 |
| Seat Depth | 18 | 18 | 18 |
| Seat Height | 20 | 20 | 20 |
| Fabric | Liberty 1030 Black / Mustard | Antique Star 2044 Ecru / Black | Snowflake 2029 Black / Mustard |
| Wood | Black | Black | Black |





A



C

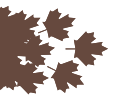


B

ALSO AVAILABLE: CHAIR, CHAIR AND A HALF & SOFA

| | A: JSH-32 Chair | (Not Shown): JSH-44 Chair & A Half | B: JSH-60 Settle | C: JSH-75 Sofa |
|----------------|-------------------|------------------------------------|--------------------|------------------------------|
| Overall Length | 32 | 44 | 60 | 75 |
| Overall Depth | 36 | 36 | 36 | 36 |
| Overall Height | 47 | 47 | 48 | 48 |
| Seat Length | 20 | 32 | 48 | 63 |
| Seat Depth | 20 ½ | 20 ½ | 20 ½ | 20 ½ |
| Seat Height | 20 | 20 | 20 | 20 |
| Fabric | Quatrain 2078 Fog | See Fabric Selections | Roswell 1008 Wheat | Snowflake 2062 Linen / Black |
| Wood | Black | See Wood Selections | Mahogany | Mahogany |





A



B



C

shown with optional skirt

| | A: JSB-38 Chair | B: JSB-62 Loveseat | C: JSB-62 Loveseat |
|----------------|--------------------------------|-------------------------------|---------------------|
| Overall Length | 38 | 62 | 62 |
| Overall Depth | 35 | 35 | 35 |
| Overall Height | 38 | 38 | 38 |
| Seat Length | 20 ½ | 44 | 44 |
| Seat Depth | 23 | 23 | 23 |
| Seat Height | 20 | 20 | 20 |
| Fabric | Snowflake 2029 Mustard / Black | Historic Flame 6001 Sandstone | Birella 1015 Walnut |
| Wood | Black | Walnut | |





D



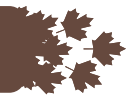
E



F

| | D: JSB-72 Sofa | E: JSB-84 Sofa | F: JSB-90 Sofa |
|----------------|------------------------------|----------------------------|------------------------------|
| Overall Length | 72 | 84 | 90 |
| Overall Depth | 35 | 35 | 35 |
| Overall Height | 38 | 38 | 38 |
| Seat Length | 54 | 66 | 72 |
| Seat Depth | 23 | 23 | 23 |
| Seat Height | 20 | 20 | 20 |
| Fabric | Monarch 2052 Black / Mustard | Snowflake 2061 Rose / Ecru | Snowflake 2062 Black / Linen |
| Wood | Black | Black | Black |





A



B



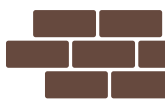
C



D

| | A: JSF-33 Chair | B: JSF-44 Chair & A Half | C: JSF-60 Settle | D: JSF-77 Sofa |
|----------------|---------------------|-------------------------------|----------------------------|------------------|
| Overall Length | 33 | 44 | 60 | 77 |
| Overall Depth | 34 | 34 | 34 | 34 |
| Overall Height | 42 | 42 | 43 | 44 |
| Seat Length | 21 | 31 | 48 | 64 |
| Seat Depth | 20 ½ | 20 ½ | 20 ½ | 20 ½ |
| Seat Height | 20 | 20 | 20 | 20 |
| Fabric | April 3008 Midnight | Virginia Sampler 3002 Mustard | Snowflake 2061 Rose / Ecrú | Tifton 1024 Navy |
| Wood | Black | Black | Mahogany | Mahogany |





A



B



C



D

| | A: JVM-36 Chair | B: JVM-47 Chair & A Half | C: JVM-60 Settle | D: JVM-75 Sofa |
|----------------|--------------------|--------------------------------|------------------------------|-------------------------------|
| Overall Length | 36 | 47 | 60 | 75 |
| Overall Depth | 38 | 38 | 38 | 38 |
| Overall Height | 47 | 47 | 47 | 47 |
| Seat Length | 21 | 32 | 45 | 60 |
| Seat Depth | 21 | 21 | 21 | 21 |
| Seat Height | 20 | 20 | 20 | 20 |
| Fabric | Roswell 1008 Wheat | Snowflake 2029 Mustard / Black | Snowflake 2062 Linen / Black | Virginia Sampler 3002 Mustard |
| Wood | Mahogany | Black | Black | Mahogany |



All American





A



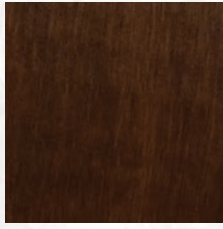
D



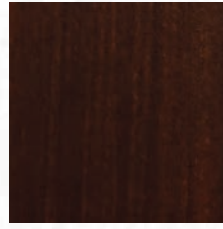
| | A: AGV-93 Sofa | (Not Shown): AGV-70 Love Seat | (Not Shown): AGV-42 Chair | D: AGV-36 Ottoman |
|----------------|-----------------------------------|-------------------------------|---------------------------|---------------------------------|
| Overall Length | 93 | 70 | 42 | 36 |
| Overall Depth | 38 | 38 | 38 | 36 |
| Overall Height | 37 | 37 | 37 | 18 1/2 |
| Seat Length | 76 | 53 | 25 | |
| Seat Depth | 21 | 21 | 21 | |
| Seat Height | 19 | 19 | 19 | |
| Fabric | Arlington 2060 Black / Mustard | See fabric selections | See fabric selections | Diamond 2037 Black / Mustard |
| Wood | Black | See wood selections | See wood selections | Black |



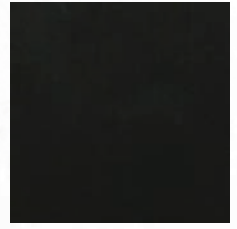
Wood SAMPLES



WALNUT



MAHOGANY



BLACK

Fabric COLLECTION





Fabric Collection **Contents**

GRADE A FABRICS ————— AC:65

GRADE B FABRICS ————— AC:66

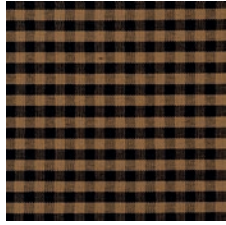
GRADE C FABRICS ————— AC:69

GRADE D FABRICS ————— AC:69

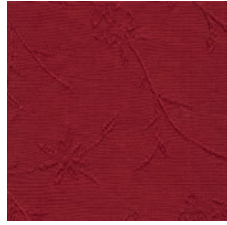
GRADE F FABRICS ————— AC:69



GRADE A FABRICS



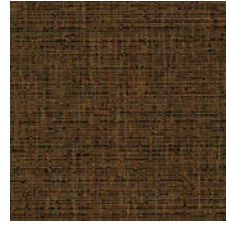
CAGNEY 1006
BLACK / MUSTARD



TIFTON 1009
CRANBERRY



PRESIDIO 1011
RUSSET



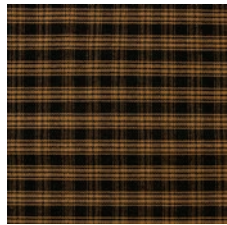
PRESIDIO 1013
CHESTNUT



DOBBY 1014
WHEAT



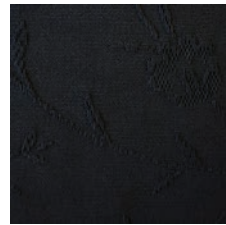
PRESIDIO 1016
GRASS



ERIN 1022
BLACK / MUSTARD



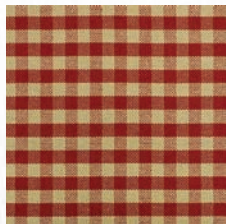
ERIN 1023
ECRU / MUSTARD



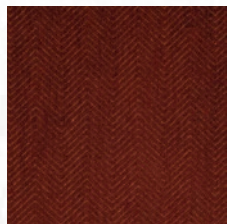
TIFTON 1024
NAVY



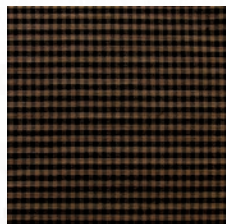
TIFTON 1025
MUSTARD



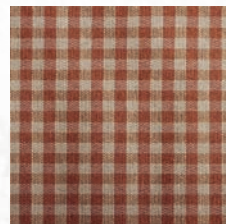
CAGNEY 1026
CRANBERRY



SHELBY 1027
BURGUNDY



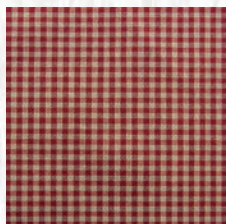
LIBERTY 1030
BLACK / MUSTARD



LIBERTY 1031
CARMEL



LIBERTY 1032
BRAZEN



LIBERTY 1033
SCARLET



LIBERTY 1034
NAVY



LIBERTY 1035
WEDGEWOOD



LIBERTY 1036
THYME



LISMORE LODGE 1075



REDDITCH WOOL 1076



TOLEDO TWILIGHT 1083

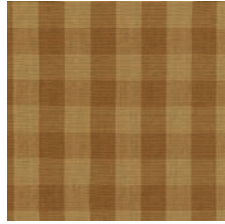




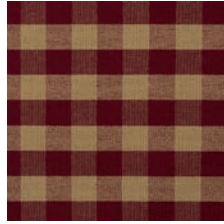
GRADE B FABRICS



TAVERN CHECK 1001
BLACK / MUSTARD



TAVERN CHECK 1002
ECRU / MUSTARD



TAVERN CHECK 1003
ECRU / ROSE



TAVERN CHECK 1004
ECRU / NAVY



TAVERN CHECK 1005
ECRU / BLACK



ROSWELL 1007 SAGE



ROSWELL 1008 WHEAT



ROSWELL 1010
CRANBERRY



TAVERN CHECK LINEN 1012
BLACK



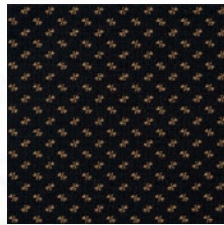
PINEAPPLE 2001
MUSTARD / BLACK



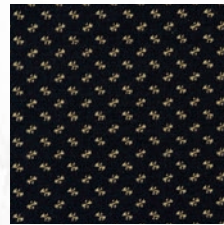
PINEAPPLE 2002
ECRU / ROSE



PINEAPPLE 2003
ECRU / MUSTARD



LITTLE BIT 2004
MUSTARD / BLACK



LITTLE BIT 2005
ECRU / BLACK



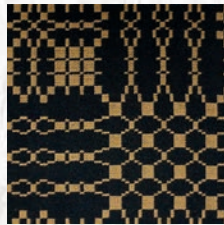
LITTLE BIT 2006
ECRU / MUSTARD



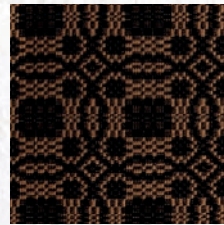
TRENTON 2007 ONYX



DORI 2008 PEBBLE



GRAYSON 2009
BLACK / MUSTARD



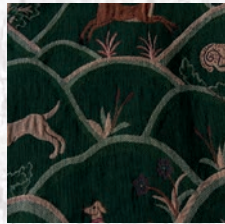
JEFFERSON 2010
BLACK / MUSTARD



ROSWELL 2011 NAVY



CARSON 2012
ECRU / MUSTARD



ABUNDANCE 2013
MEADOW



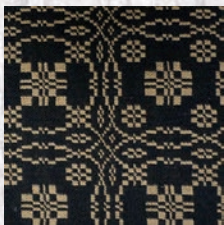
SURREY 2014 ANTIQUE



VINTAGE 2015 EBONY



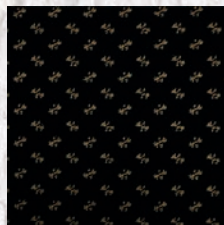
VINTAGE 2016 SCARLET



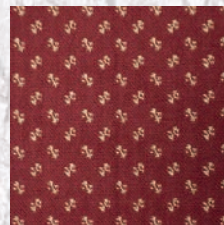
LOVERS KNOT LINEN
2017 BLACK



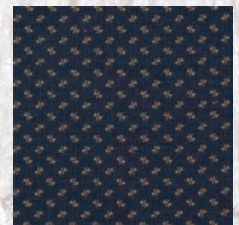
PINEAPPLE 2018
ECRU-NAVY



LITTLE BIT 2020
BLACK / LINEN



LITTLE BIT 2021
ECRU / ROSE



LITTLE BIT 2022
ECRU / NAVY



GRADE B FABRICS



CARSON 2023
ECRU / ROSE



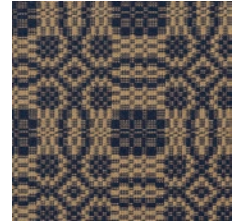
LOVERS KNOT 2024
MUSTARD / BLACK



LOVERS KNOT 2025
ECRU / ROSE



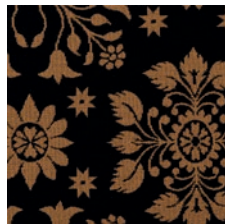
LOVERS KNOT 2026
ECRU / NAVY



JEFFERSON 2027
ECRU / NAVY



JEFFERSON 2028
ECRU / ROSE



SNOWFLAKE 2029
MUSTARD / BLACK



NEW HOLLAND 2030
ECRU BLACK



SALEM 2031 EBONY



SALEM 2032 GARNET



SALEM 2033 COBALT



SALEM 2034 EMERALD



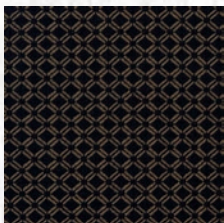
OTTO 2035 MULTI



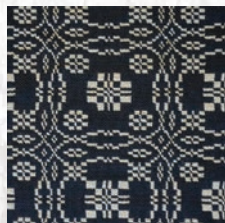
ANTIQUÉ 2036 DESERT



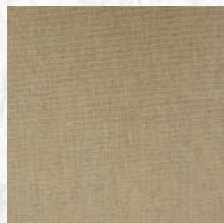
DIAMOND 2037
MUSTARD / BLACK



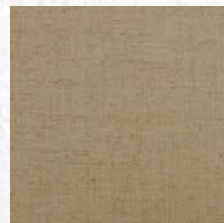
DIAMOND 2038
LINEN / BLACK



LOVERS KNOT 2039
NATURAL / NAVY



LINEN 2040 NATURAL



ENDORSE 2041
CLAY



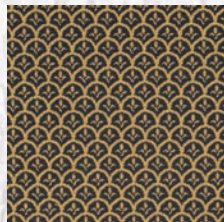
LOVERS KNOT 2042
ECRU / BLACK



ANTIQUÉ STAR 2044
ECRU / BLACK



ANTIQUÉ STAR 2045
BLACK / MUSTARD



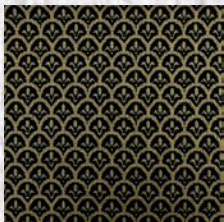
TRIPOLI 2047
ECRU / NAVY



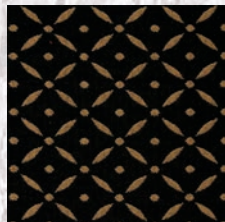
NEW HOLLAND 2048
DUSK



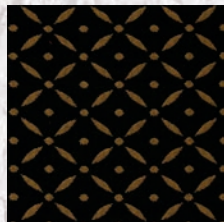
NEW HOLLAND 2049
ECRU / NAVY



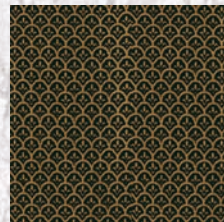
TRIPOLI 2050
ECRU / BLACK



MONARCH 2051
ECRU / BLACK



MONARCH 2052
BLACK / MUSTARD



TRIPOLI 2053
BLACK / MUSTARD

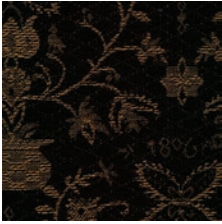


NEW HOLLAND 2054
ECRU / BLUE

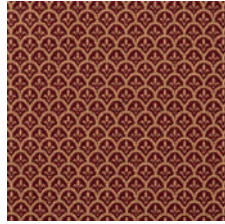




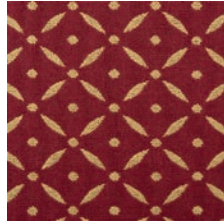
GRADE B FABRICS



NEW HOLLAND 2055
BLACK / MUSTARD



TRIPOLI 2056
ECRU / ROSE



MONARCH 2058
ECRU / ROSE



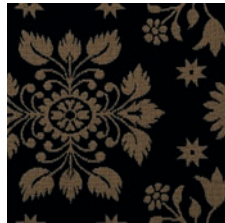
ARLINGTON 2059
ECRU / BLACK



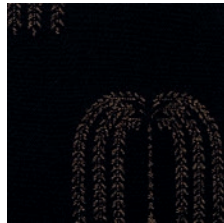
ARLINGTON 2060
MUSTARD / BLACK



SNOWFLAKE 2061
ECRU / ROSE



SNOWFLAKE 2062
LINEN / BLACK



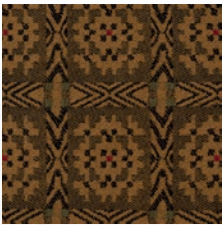
WILLOWTREE 2063
BLACK / MUSTARD



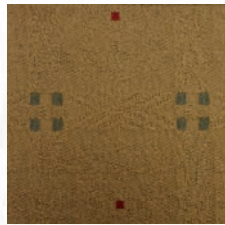
JEFFERSON 2064
OATMEAL



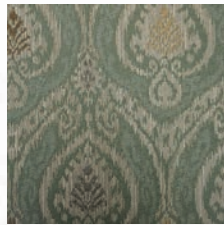
SNOWFLAKE 2066
ECRU / NAVY



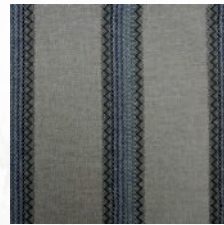
TRENTON 2068
CAMEL



TRENTON 2069
MUSTARD



PINEDALE WILLOW 2071



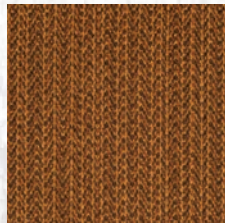
KAIRN 2072
OCEAN



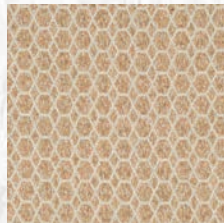
KAIRN 2073
SPICE



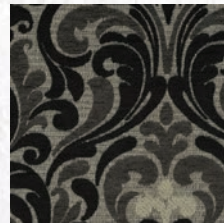
AGENDA 2074
CRIMSON



DEVOTE 2075
ALLSPICE



STACY 2076
MORNING



HEDGE 2077
MARBLE



QUATRIN 2078
FOG



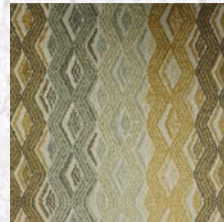
QUATRIN 2079
EARTH



CASTLE 2080
SLATE



SONORA 2081
BRONZE



GILBERT 2082
HONEY





GRADE C FABRICS



VIRGINIA 3002
SAMPLER / MUSTARD



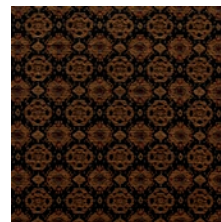
COLONIAL 3003
FLAME / SAND



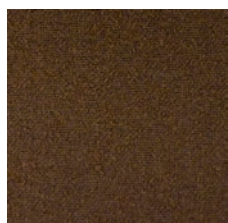
COLONIAL 3004
FLAME / TWINE



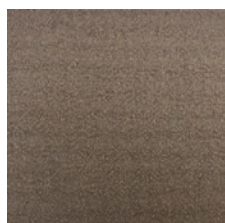
APRIL 3008 MIDNIGHT



BUCKINGHAM 3009 RAVEN



WOOL 3011 FOREST



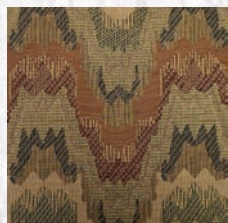
WOOL 3012 LINEN

GRADE D FABRICS



BOSTON CHECK 4001 SAGE

GRADE F FABRICS



HISTORIC FLAME 6001
SANDSTONE





NEW IN 2021!
GRANVILLE



TOWN & COUNTRY
furnishings LLC

Ph: 330.359.5004
Fax: 330.359.6252

7412 Massillon Road SW
Navarre OH 44662

sales@townandcountryfurnishings.com

TownAndCountryFurnishings.com